



# COMPETITION GUIDE 2025

### **Hauler Staging & Pit Ticket Sales**

- Hauler staging begins on Tuesday at 10:00am.
- Staging will be in the gravel parking lot in front of the Credential building.
- Please do not block driveways.

### **Pit Pass sales will be open:**

- Wednesday 10:00am-5:00pm
- Thursday 10:00am - 5:00pm
- Friday 10:00am - 5:00pm
- Saturday 10:00am - 5:00pm

### **Thursday Practice (Optional)**

- All classes may use any tire they would like
- \$150 per sprint car
- \$50 per Modified, Supermodified, Legend, Bandolero

### **Pit Stalls**

- Pit Stalls will be based on hauler size.
- If you need to pit near another team please arrive at the pit entrance in line together. We will be parking all rigs in the next in line procedure. There will be no stall saving.

### **Team Parking/Camping**

- Team members' parking will be in the overflow lot in front of credentials. Same location as hauler staging.
- No Personal Vehicles will be allowed in the pit area
- No camping in the pit area.

### **Camping**

- Located in turns 3 and 4. Entrance to the Stockyards Camping will be through the pit gate.
- Camping spot purchase available June, 2025.

### **Driver/ Team Merchandise**

- Per track policy, sales will only be allowed at your team trailer in the pit area
- Fans will be invited/allowed to the pits after racing both Friday and Saturday night

### **Golf Carts & ATV's**

- Golf Carts/ATV's will only be allowed for pushing race cars.

### **Transport Hospital**

- University Medical Center (Level 1 Trauma) —1800 W Charleston Blvd, Las Vegas NV 89102

### **Shipping/Receiving**

- If you need to ship items to the race track the address is:  
LVMS Open Wheel Showdown  
Attn: Your Name  
7000 Las Vegas Blvd North  
Las Vegas, NV 89115
- Packages will be held at the maintenance building located northeast of the NASCAR track for pickup.

### **Contact Info**

Jared Owen Operations Manager — 317-258-6406  
Justin Carey Competition Director — 317-460-2011  
Brad Hayes Technical Director — 317-938-5726  
Davey Hamilton Jr Co-Owner/Founder— 765-336-1092  
Stuart Young Co-Owner/President — 704-936-8340

## Entrance to Camping / Pits / GA Parking & Entrance:

### **From Las Vegas Blvd. North:**

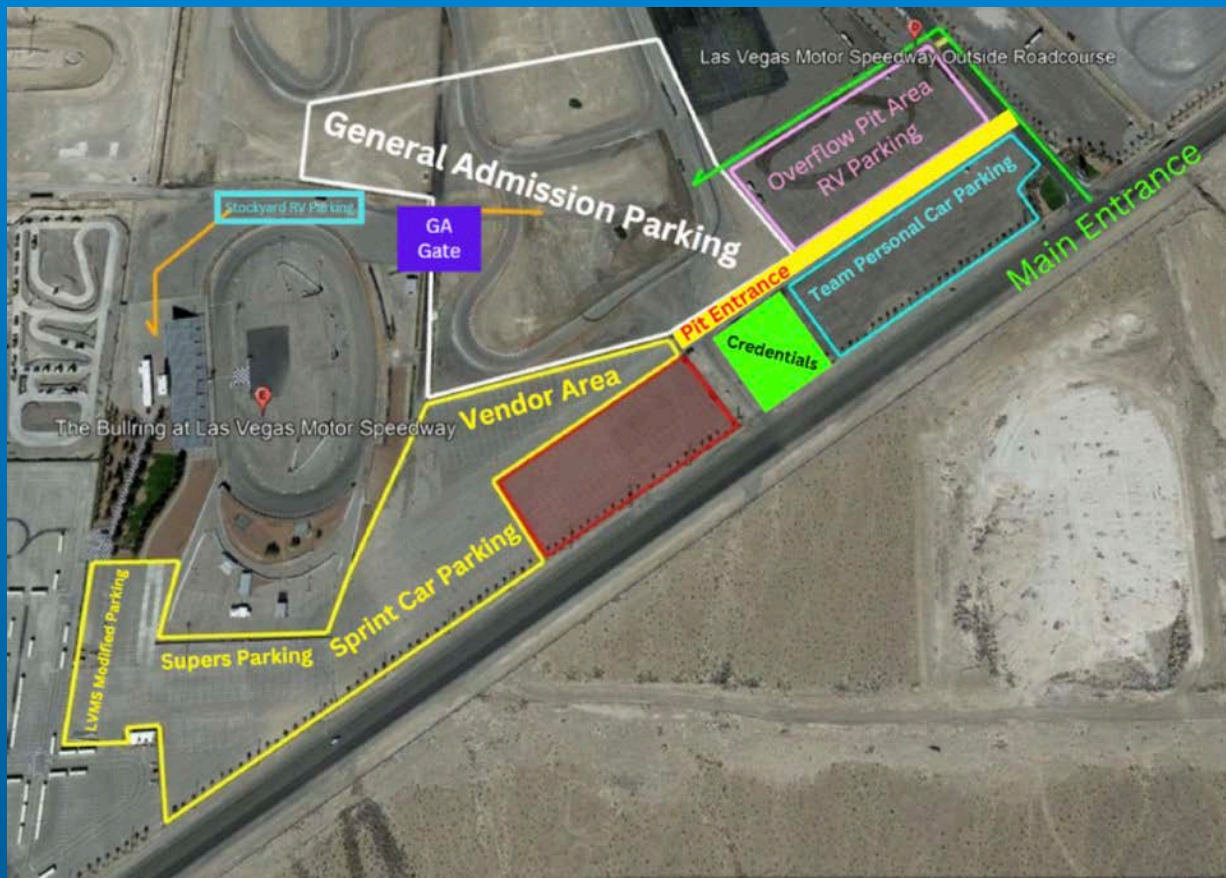
Turn left at Entry 4. Take the first left and proceed to the gate to check in.

### **From Las Vegas Blvd. South:**

Turn right at Entry 4. Take the first left and proceed to the gate to check in.

### **From I-15:**

Take Exit 54, Speedway Blvd. and follow the exit ramp to the right. Take an immediate right turn at Hollywood Blvd. Follow Hollywood Blvd. all the way to Las Vegas Blvd. Turn left on to Las Vegas Blvd. and proceed north. Turn left at Entry 4, then take the first left and proceed to the gate to check in.





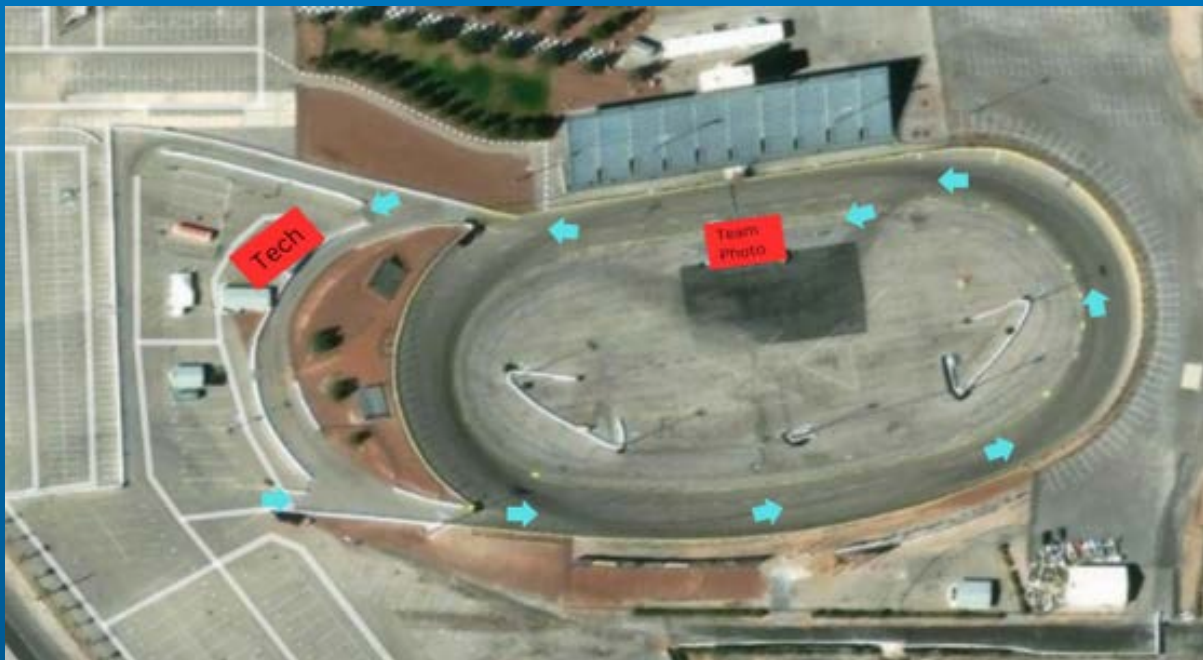
# Schedule

TBA



# Pre-Tech Procedures

- Wednesday tech will begin at 2pm
- Thursday morning tech will begin at 9am
- All sprint cars, modifieds, supermodifieds, legends and bandoleros must go through tech prior to hitting the track for practice. Once the car passes tech, it will be given a sticker. No car will be allowed to practice without the aforementioned sticker.  
\*Any car not going through tech on Wednesday or Thursday, must go through tech Friday morning before going on the track\*
- Please limit the amount of crew members at tech to 2 plus the driver. It is mandatory the driver comes to tech to pass tech and be allowed on the track. Please come to tech with the tooling needed to remove any and all body panels as well as tooling needed to check restrictors. The driver must bring their helmet, fire suit, head and neck restraint system, raceceiver (456.6875), and ear-buds.
- We will take all sprint cars on the track in turn 2 and around turns 3 and 4 to the front stretch. At the start finish line we will be taking a picture of all the cars and team members. Map below to show path



# Sprint Car Tire Information

- Below outlines the tire selection and format for the 2025 Open Wheel Showdown. Hoosier Tire West will be at the track for the event and will be able to help mount and dismount tires for the team should they need it.
- Each team will be allowed a maximum of 4 sets of tires. 4 LF 4 RF 4 LR 4 RR tires to be stamped for the event. Maximum of 4 tires per corner can be purchased.
  - Left Front (LF) 2010 Right Front (RF) 2030  
Left Rear (LR) M30 Right Rear (RR) 2045
- The Event starts with first practice on Friday 11/7.
- Tire purchases begin Wednesday 11/6.
- You may use ANY tire on Thursday for Practice. No tire enforcement on Thursday. Can be tires brought from home or tires purchased for the Event.
- Cars making the A main on Friday may purchase an additional RR tire on Friday evening for the halfway break.
  - This order will be determined by your qualifying order. Fastest to Slowest.
- Cars transferring on Saturday may purchase at the conclusion of the B-Main.

## Sprint Car Tire Selection Procedures

Tire selection is determined by the way entries were submitted. The official tire selection order is located on the next page.

- We will allow up to 3 teams in the tire tent at a time to select their tires
- There will be a 5 minute time limit once in the tent
- You will pay for your tires before selecting them
  - No open accounts. Must have Cash, Check, or Card
- Maximum of 2 people per car allowed in the tire tent at one time
- If you miss your spot in line, you will go to the end of the line
- When the line is empty from selecting your 4 sets of tires for the event, we will then open the tire tent up for any additional tires



# Sprint Car Tire Selection Order

## TBA



# Sprint Car Entry List

## TBA



# Sprint Car Format

## Qualifying

Heat 1 Lineup	
Q1	Q7
Q13	Q19
Q25	Q31
Q37	Q43
Q49	Q55
Q61	Q67

Heat 2 Lineup	
Q2	Q8
Q14	Q20
Q26	Q32
Q38	Q44
Q50	Q56
Q62	Q68

Heat 3 Lineup	
Q3	Q9
Q15	Q21
Q27	Q33
Q39	Q45
Q51	Q57
Q63	Q69

Heat 4 Lineup	
Q4	Q10
Q16	Q22
Q28	Q34
Q40	Q46
Q52	Q58
Q64	Q70

Heat 5 Lineup	
Q5	Q11
Q17	Q23
Q29	Q35
Q41	Q47
Q53	Q59
Q65	Q71

Heat 6 Lineup	
Q6	Q12
Q18	Q24
Q30	Q36
Q42	Q48
Q54	Q60
Q66	Q72

Heat 1 Finish	
1	
2	
3	
4	
5	
6	
7	
8	
9	
10	

Heat 2 Finish	
1	
2	
3	
4	
5	
6	
7	
8	
9	
10	

Heat 3 Finish	
1	
2	
3	
4	
5	
6	
7	
8	
9	
10	

Heat 4 Finish	
1	
2	
3	
4	
5	
6	
7	
8	
9	
10	

Heat 5 Finish	
1	
2	
3	
4	
5	
6	
7	
8	
9	
10	

Heat 6 Finish	
1	
2	
3	
4	
5	
6	
7	
8	
9	
10	

## Pole Shuffle

Pole Shuffle lineup will be determined by a draw on the front stretch. Winners and second place of heat races will be in the Pole Shuffle

### Pole Shuffle Starting Lineup

Draw 1  
Draw 3  
Draw 5  
Draw 7  
Draw 9  
Draw 11

Draw 2  
Draw 4  
Draw 6  
Draw 8  
Draw 10  
Draw 12

## C - Main 15 Laps

Cars finishing in 7th place on back will start the C-main straight up by heat race. Top 6 to the B-Main

### C-Main Starting Lineup

7th Place	Heat 1	Heat 2
	Heat 3	Heat 4
	Heat 5	Heat 6
8th Place	Heat 1	Heat 2
	Heat 3	Heat 4
	Heat 5	Heat 6
9th Place	Heat 1	Heat 2
	Heat 3	Heat 4
	Heat 5	Heat 6
10th Place	Heat 1	Heat 2
	Heat 3	Heat 4
	Heat 5	Heat 6

## B - Main 20 Laps

Cars finishing in 4th place to 6th place will start the B-main straight up by heat race. Cars finishing in 1st to 6th place in the C- Main will start straight up 19th 24th

### B-Main Starting Lineup

4th place	Heat 1		Heat 2
	Heat 3		Heat 4
	Heat 5		Heat 6
5th place	Heat 1		Heat 2
	Heat 3		Heat 4
	Heat 5		Heat 6
6th place	Heat 1		Heat 2
	Heat 3		Heat 4
	Heat 5		Heat 6
C-Main	1st		2nd
	3rd		4th
	5th		6th

## A - Main 100 Laps

A- Main will lineup with the 1st- 12th being from the Pole Shuffle in finishing order. 13th - 18th will be by heat race finish. 19th - 24th from B main. 25th and 26th Provisional

### A-Main Starting Lineup

Pole Shuffle	1st		2nd
	3rd		4th
	5th		6th
	7th		8th
	9th		10th
	11th		12th
	3rd Place	Heat 1	
Heat 3			Heat 4
Heat 5			Heat 6
B - Main	1st		2nd
	3rd		4th
	5th		6th
Provisional			Provisional

# Supermodified Tire Information

Below outlines the tire rules for the 2025 Open Wheel Showdown. Hoosier Tire West will be at the track for the event and will be able to help mount and dismount tires for the team should they need it.

Mandatory tire requirements for RR only.

- Right Rear (RR) will be a 2045
  - Must purchase a minimum of one from the track
    - Can preorder from Hoosier Tire West by calling 559-485-4612
- Tire will be stamped at time of purchase
- You must qualify and start the feature on the stamped tire purchased from the track
- You may use ANY tire on Thursday for Practice or Friday practice.

Recommended tires for the LR, RF, LF but not mandatory. LR, RF, LF is an open tire rule and the below are just recommendations for the teams as a reference only.

- LF 11.0/24.0-15 2030
- RF 15.0/26.0-15 M30
- LR 15.0/26.0-15 M30
  
- Tire sales begin Wednesday 11/5.
- Teams can bring all LR, RF, LF from home or preorder from Hoosier Tire West
- All 4 corners will be stamped after qualifying and you must start the race on those 4 tires
- You may use ANY tire on Thursday for Practice. No tire enforcement on Thursday.

Qualifying and Race Tires

- All 4 corners will be stamped for qualifying.
- You must start the feature on the 4 tires you qualify on with the RR being purchased from Hoosier Tire at the event and stamped at time of purchase as well.

Hoosier Tire Tent Notes

- You will pay for your tires before selecting them
- No open accounts. Must have Cash, Check, or Card
- Maximum of 2 people per car allowed in the tire tent at one time
- If you need tires please call Hoosier Tire West and pre order your tires for this event 559-485-4612 so they can allocate enough tires



# Supermodified Entry List

## TBA

# Supermodified Entry List

**Qualifying: 2 Laps**

**Feature Lineup:**

**Fast qualifier will roll dice with the numbers 4,6,8 to determine the invert.**

**The cars not Involved In the Invert will start the race straight up behind the Invert cars.**

**Feature will be 40 laps.**

# Open Wheel Modified Tire Information

Below outlines the tire rules for the 2025 Open Wheel Showdown. Hoosier Tire West will be at the track for the event and will be able to help mount and dismount tires for the team should they need it.

- Each team will be allowed a maximum of 4 sets of tires. 4 LF 4 RF 4 LR 4 RR tires to be stamped for the event. Maximum of 4 tires per corner can be purchased.
  - All 4 corners will be 970
- Tires will be available for purchase starting on Wednesday
- Have to qualify on a stamped set of tires purchased from Hoosier Tire West at the event.
- Must start the A-Main on a stamped set of tires purchased at the event
- You will pay for your tires before selecting them
  - No open accounts. Must have Cash, Check, or Card
- You may call Hoosier Tire West and pre order your tires for this event  
559-485-4612



# Open Wheel Modified Entry List

## TBA

# Open Wheel Modified Format

## Qualifying

Top 8 will go to heat 1. Heat 1 lineup will be set by a redraw. Heat 1 finish will start the A main Straight up. Heats 2 and 3 will be set by qualifying order. Heat 2 odd qualified cars. Heat 3 even qualified cars. Starting straight up. Top 5 finishers transfer to the A-Main

Heat 1 Lineup	
Draw 1	Draw 2
Draw 3	Draw 4
Draw 5	Draw 6
Draw 7	Draw 8

Heat 2 Lineup	
Q9	Q11
Q13	Q15
Q17	Q19
Q21	Q23
Q25	Q27
Q29	Q31
Q33	Q35
Q37	Q39

Heat 3 Lineup	
Q10	Q12
Q14	Q16
Q18	Q20
Q22	Q24
Q26	Q28
Q30	Q32
Q34	Q36
Q38	Q40

Heat 1 Finish	
1	
2	
3	
4	
5	
6	
7	
8	

Heat 2 Finish	
1	
2	
3	
4	
5	
6	
7	
8	
9	
10	
11	
12	
13	
14	
15	
16	

Heat 3 Finish	
1	
2	
3	
4	
5	
6	
7	
8	
9	
10	
11	
12	
13	
14	
15	
16	



## B - Main 25 Laps

Cars finishing in 5th place to 16th place will start the B-main straight up by heat race. Heat race 1 on the inside, heat race 2 on the outside. Top 8 will transfer to the tail of the A-main.

### B-Main Starting Lineup

<b>6th place</b>	Heat 2		Heat 3
<b>7th place</b>	Heat 2		Heat 3
<b>8th place</b>	Heat 2		Heat 3
<b>9th place</b>	Heat 2		Heat 3
<b>10th place</b>	Heat 2		Heat 3
<b>11th place</b>	Heat 2		Heat 3
<b>12th place</b>	Heat 2		Heat 3
<b>13th place</b>	Heat 2		Heat 3
<b>14th place</b>	Heat 2		Heat 3
<b>15th place</b>	Heat 2		Heat 3
<b>16th place</b>	Heat 2		Heat 3

## A - Main 75 Laps

A- Main will lineup with the 1st- 8th being from heat 1 in finishing order. 9th- 18th will be by heat race finish. Heat 1 on the inside and heat 2 on the outside. 19th - 26th from B main. 2

### A-Main Starting Lineup

	1st		2nd
	3rd		4th
<b>Heat 1</b>	5th		6th
	7th		8th

<b>1st Place</b>	Heat 2		Heat 3
<b>2nd Place</b>	Heat 2		Heat 3
<b>3rd Place</b>	Heat 2		Heat 3
<b>4th Place</b>	Heat 2		Heat 2
<b>5th Place</b>	Heat 2		Heat 3

	1st		2nd
	3rd		4th
<b>B- Main</b>	5th		6th
	7th		8th



# Legends Information TBA



# **Bandoleros Information TBA**



# Hotel Partner



- **Phone Number: 866-791-7626**
- **Call in and say you are with Open Wheel Showdown**

# On-Site Vendors

Vendors will continue to be added closer to the event.



HOOSIER





**Special Thanks to All OWS Partners**

**Partners TBA**

